

Elevate Me Slough



Whatever journey you're on, begin it at ElevateMe



Employment in Slough 2015

**Information & Communication
Technology (ICT)**

About the sector

The information and communications technology (ICT) sector covers a range of different activities using any communication device or application, including radio, television, mobile phones, computer and network hardware and software, satellite systems, as well as the various services and applications associated with them, such as videoconferencing and distance learning.

The pace of technological change is rapid, and the number of people employed in the ICT sector is also growing quickly, with around 77,000 new jobs created across the UK in 2014. Technical specialist roles are driving the rapid increase, as more and more programmers, software developers and IT engineers are employed across all sectors of the economy.

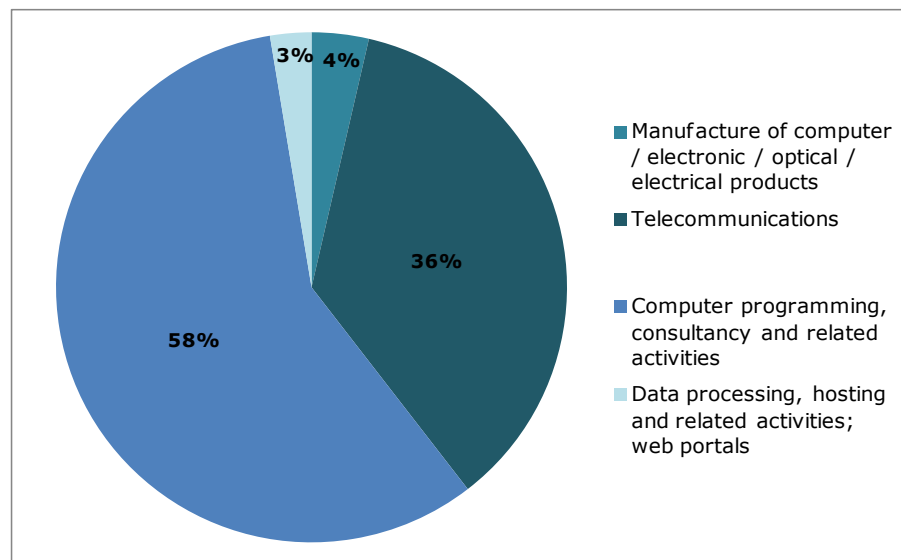
Employment

Employment levels in the ICT sector are rising (nationally and locally).

In 2015, there were around 14,100 employee jobs in the ICT sector in Slough, with the majority in telecommunications and in computer consultancies.

Between 2015 and 2020 forecasts suggest that employment in the ICT sector will increase by approximately 8% equating to the creation of approximately 1,200 additional jobs.

ICT Jobs in Slough

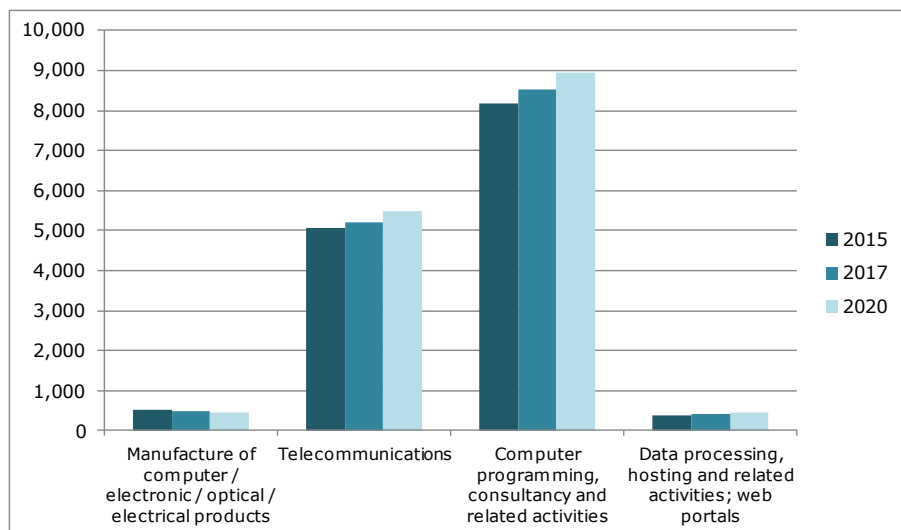


Major Local Employers

Key local ICT companies include:

- Airwave Solutions
- BlackBerry (Europe)
- Hitachi Europe
- Logicalis (Datatec) Limited
- O2 (Telefonica)
- Zensar Technologies
- ZTE (UK)

Future Employment Growth



The majority of new jobs predicted to be created in the ICT sector in Slough over the next five years are likely to be in the computer programming, consultancy and related activities sub-sector. This includes software development, website design and installation services.

Future Occupational Growth

In addition to an increase in the overall number of jobs in the ICT sector, there will also be vacancies created by people retiring and leaving the labour force. A total of around 2,700 vacancies are forecast in occupations that are commonly found in the ICT sector as a result of retirements, and the table below provides details for a selection of these occupations.

Occupation	Qual Level	Jobs 2015 (& % growth 2015-2020)	Vacancies created through retirements 2015 - 2020
Programmers and software development professionals	6	2,030 (9%)	540
Other IT & telecoms professionals (including software & systems testers)	6	1,770 (7%)	420
IT specialist managers	6	1,660 (8%)	420
IT business analysts, architects and systems designers	6	810 (8%)	200
IT operations technicians	3	710 (8%)	180
IT user support technicians	3	620 (8%)	150
IT project and programme managers	6	590 (7%)	140
Information technology and telecommunications directors	6	460 (9%)	130
Telecommunications engineers	3	500 (9%)	130
IT engineers	6	390 (11%)	110
Electronics engineers	6	370 (8%)	90
Web design and development professionals	6	290 (12%)	90

'Qual level' is an indication of the typical level of qualification required to work in each occupation. Please refer to the [National Careers Services](#) website for a full explanation of each qualification level.

Occupations / Jobs Advertised

Between January and September 2015 there have been approximately 1,500 jobs advertised online in Slough in occupations commonly found in the ICT sector. It should be noted that some of these vacancies will be with employers that don't operate within the ICT sector, for example, IT technicians are frequently employed across all sectors of the economy.

Occupation	Qual Level	Job Postings*
Programmers and software development professionals	6	910
IT business analysts, architects and systems designers	6	480
Other Information technology and telecommunications professionals	6	330
IT user support technicians	3	300
IT operations technicians	3	300
Web design and development professionals	6	260
Electrical and electronic trades	3	240
IT project and programme managers	6	130
Design and development engineers	6	130
IT specialist managers	6	110
Telecommunications engineers	3	90
ICT and telecommunications directors	6	70
Electronics engineers	6	30
IT engineers	6	20

** For vacancies posted online from 1st January to 1st September 2015. Please click on links for further information about these occupations from the National Careers Service website.*

The high numbers of vacancies being advertised suggests that there is strong demand locally for skilled ICT workers.

The data also suggests that most of the current vacancies being advertised online are for higher level ICT professional jobs requiring qualifications at degree level or higher.



Advertised Salaries

Based on information from local job advertisements posted online, the table below shows average full-time salaries for those occupations related to ICT that have been most frequently advertised online. Since the start of 2015, the majority of ICT-related jobs advertised offered annual salaries above £50,000.

Occupation	Average Salary Advertised
Programmers and software development professionals	£52,600
IT business analysts, architects and systems designers	£59,700
Information technology and telecommunications professionals	£64,600
IT user support technicians	£30,500
IT operations technicians	£40,600
Web design and development professionals	£44,100
Electrical and electronic trades	£28,100
IT project and programme managers	£66,500
Design and development engineers	£49,400
IT specialist managers	£50,100
Telecommunications engineers	£53,000
ICT and telecommunications directors	£62,700
Electronics engineers	£50,000



Sector related courses

Further Education Colleges and Universities in the Slough area offer a range of post-16 courses related to ICT occupations. Below is a small selection of examples:

[Computing BTEC Diploma Level 1](#)
[Computer Science Pathway GCSE Level 2](#)
[European Computer Driving Licence \(ECDL\) Level 2](#)
[BTEC Level 2 Diploma in ICT \(Information and Creative Technology\)](#)
[IT BTEC Extended Diploma Level 3](#)
[Computing Access to HE Level 3](#)
[BTEC Level 5 HND + Diploma in Computing & Systems Development](#)
[BSc Computer Science](#)
[BSc Artificial Intelligence](#)
[BSc \(Hons\) Creative Computing](#)
[BSc \(Hons\) Information Technology Management for Business](#)
[BEng Computer Systems Engineering \(Software\)](#)
[MSc Computer Communication Networks](#)

For further information on courses being offered in the area please use the following links:

Colleges

[East Berkshire College](#)
[Brooklands College](#)
[Uxbridge College](#)
[Bracknell and Wokingham College](#)

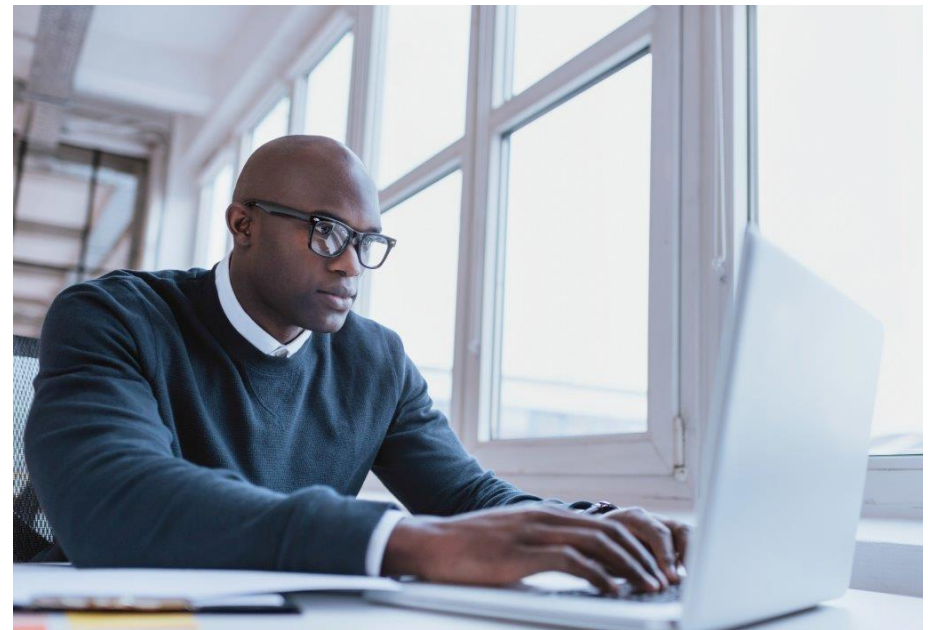
Universities

[University of Reading](#)
[Brunel University](#)
[University of West London](#)

Apprenticeships

There are also a wide range of **Apprenticeships** relating to this sector, which offer the opportunity to combine paid work with on the job learning towards formal qualifications. Below are some examples of relevant Apprenticeship frameworks that are available to study through local providers:

[IT Application Specialist Apprenticeship Intermediate](#)
[IT User Apprenticeship](#)
[IT Professional Apprenticeship](#)
[IT Application Specialist Apprenticeship Advanced](#)
[IT Higher Apprenticeship](#)



Skills in Demand

Data from recently advertised jobs in ICT-related occupations suggests that the following skills are sought by employers in this sector. This list provides examples of the sorts of skills required to work in the sector in some of the most commonly advertised vacancies, but is no means exhaustive.

- SQL
- LINUX
- JavaScript
- ITIL
- SQL Server
- Technical Support
- Cisco
- .NET Programming
- Information Technology Industry Experience
- Business Intelligence
- Microsoft C#
- C++
- Transact-SQL
- Java
- IT Support
- Telecommunications
- Firewalls
- Windows Server
- Data Warehousing
- Extensible Markup Language (XML)
- Extraction Transformation and Loading (ETL)
- hypertext preprocessor (php)
- Oracle
- Transmission Control Protocol / Internet Protocol (TCP / IP)

- Network Engineering
- Web Site Development
- Software Development

Employability Skills

Employers are increasingly looking for skills that go beyond qualifications and experience when recruiting new employees. While education may enhance your eligibility for a job, today's workplaces require a varied mix of employability skills. These skills can be applied in any job in any sector, and include:

- Communication
- Self-management
- Thinking and solving problems
- Working together
- Understanding the business
- Using numbers effectively
- Using language effectively
- Using IT effectively

Data Sources

1. Employment figures and forecasts have been produced using the EMSI Analyst tool which used Office for National Statistics data from the Annual Population Survey 2014 and the Business Register and Employment Survey 2013.
2. Real time vacancy data is sourced from Labour Insight (Burning Glass Technologies), and is based on vacancies posted online between 1st January and 1st September 2015.
3. Information on post-16 learning opportunities are from local providers' own websites.

Access to locally-informed and easy-to understand labour market intelligence is a key component of providing good quality careers information to young people, to assist them in making choices about what to do when they reach the end of their compulsory schooling. This series of sector-based reports brings together a range of employment and jobs data about the local economy, and is aimed at providing a resource to support all employability and careers professionals working in the Slough area.

Employment in Slough 2015 aims to help individuals by giving them locally targeted information about the likely levels of demand for different types of work, common skills requirements and sources of learning to pursue qualifications relevant to each sector. Hopefully these reports will help people make better informed choices relating to work and learning, that will enable them to secure the careers they want within a growing and diverse economy.

For further information or support, contact **Elevate Me Slough**

Email: elevate@slough.gov.uk

Website: <http://slough.elevateme.org.uk/contact.htm>

Tel: 01753 875510 (Slough Young People's Service)

or

Employment & Learning Advice Service (Slough Borough Council)

Email: ela@slough.gov.uk

Website: www.slough.gov.uk/jobs/employment-and-learning-advice.aspx

Tel: 01753 476622 or 01753 476611

This profile was prepared by

Crews Associates



on behalf of

Slough Council



supported by **Thames Valley Berkshire LEP**



and

Slough Elevate Me City Deal Project

